



First Circular

Welcome to STRATI 2026 in China: A New Chapter in Global Stratigraphy

We are excited to invite the global stratigraphy community to STRATI 2026 – Exploring the Depths: Bridging Tradition and Innovation in Stratigraphy, taking place from June 28 to July 3, 2026, at the Suzhou DDE Center in Jiangsu Province, China.

The STRATI Congress has long served as a cornerstone of international stratigraphic research, fostering dialogue and innovation across continents with a legacy rooted in Europe. As Earth science challenges and opportunities become increasingly interconnected, STRATI 2026 represents a pivotal opportunity to enhance global cooperation. Hosting this edition in Suzhou reflects the International Commission on Stratigraphy's (ICS) dedication to promoting inclusive worldwide scientific exchange and addressing shared priorities in stratigraphic research.

This congress comes at a critical time for the Earth sciences. The rising demand for data integration, harmonized chronostratigraphic frameworks, and collaborative solutions to planetary-scale challenges, including climate archives and resource sustainability and calls for renewed global synergy. STRATI 2026 will act as a catalyst for these efforts, not only strengthening the traditional research in stratigraphy and high-resolution geochronology, but also leveraging advancements in open-access digital platforms that empower scientists worldwide.

Suzhou, a city renowned for its harmonious blend of heritage and modernity, provides an ideal backdrop for this global dialogue. The Suzhou DDE Center embodies the spirit of international scientific collaboration. As a hub for open-data initiatives and interdisciplinary cooperation, it will serve as a dynamic venue for showcasing global innovations in stratigraphy and facilitating hands-on engagement with cutting-edge tools.

We envision STRATI 2026 as a milestone in our collective progress. Over six days, participants will share knowledge through thematic sessions, workshops, and field excursions across iconic geological regions. We particularly encourage subcommissions, working groups, and early-career scientists to shape the program, ensuring that diverse perspectives inform the agenda. Together, we will explore how stratigraphy can bridge disciplinary divides, refine global standards and correlations, and illuminate Earth's history with unprecedented clarity.

In the spirit of unity and discovery, we warmly invite researchers, educators, and policymakers worldwide. Let us seize this moment to forge partnerships that transcend borders and advance stratigraphy as a truly global endeavor. Join us in Suzhou to write the next chapter of our planet's story—together.

Shuzhong Shen, Maoyan Zhu, Zhong-Qiang Chen

Chairs of STRATI 2026





STRATI 2026

General information

Congress dates: **June 28th-July 3rd, 2026**

Website: <https://www.strati2026.org/>

Contact: strati2026@ddeworld.org

Organizing Committee Chairs: Shuzhong Shen, Maoyan Zhu, Zhong-Qiang Chen

International Scientific Committee Chairs: Elisabetta Erba, Shuzhong Shen, Charles Henderson

See the full list on the website.

Congress Schedule

June 24th -28th	Pre-conference field excursions
June 28th	Onsite registration, workshops, icebreaker
June 29th -30th	Scientific symposia
July 1st	Mid-conference field excursion
July 2nd-3rd	Scientific symposia
July 4th-July 10th	Post-conference field excursions

Call for Sessions

We invite you to propose sessions for STRATI 2026. The session can be general session or subcommission session. Session proposal submission will be opened on **May 1st, 2025 through the STRATI 2026 website**, and due to **December 1st, 2025**. One current proposal is to have an open ICS business meeting that also includes various presentations in a plenary or roundtable session. In addition, subcommissions could be encouraged to include a business meeting in their dedicated sessions. All subcommissions should plan to conduct a business meeting. Please contact strati2026@ddeworld.org to book the meeting room.

Field excursions

The following excursions will be arranged.

- Critical stratigraphic boundary/intervals in Yunnan Province, SW China**
Pre-conference excursion, 7 days



Attractions:

- The Ediacaran–Cambrian boundary at the Meishucun section, Kunming City
- The Early Cambrian Chengjiang fauna, Chengjiang City



STRATI 2026

- Late Silurian Xiaoxiang and Early Devonian Xitun vertebrate faunas, Qujing City
- Terrestrial Permian–Triassic sections at Taoshujing and Guanbachong, Zhaotong City

2. The Cryogenian-Cambrian stratigraphy and biotas in Guizhou and W. Hunan, SW China

Post-conference excursion, 7 days



Attractions:

- The Ediacaran Weng'an biota site at Beidoushan Mine, Weng'an County
- The basal Wuliuan GSSP and the fossil sites of the Balang and Kaili biotas, Jianhe County
- The Ediacaran Wenghui biota, Ediacara-type fossils at Taoying and the Cambrian Huayuan biota, Huayuan
- The GSSPs of Cambrian Guzhangian and Paibian stages, Guzhang and Huayuan

3. Late Paleozoic to earliest Mesozoic stratigraphy and faunas in Guizhou, South China

Pre-conference excursion, 4 days

Attractions:

- The Naqing Section, potential section for the remaining Carboniferous GSSPs, Luodian County
- The Early Triassic lagerstätten of the Wangmo and Guiyang biotas, showing the rapid rise of modern-type marine ecosystems following the end-Permian mass extinction



4. From Snowball Earth to Great Mass Extinction: Ediacaran to Triassic Stratigraphic Records in the Three Gorge area, central China.

Post-conference excursion, 7 days



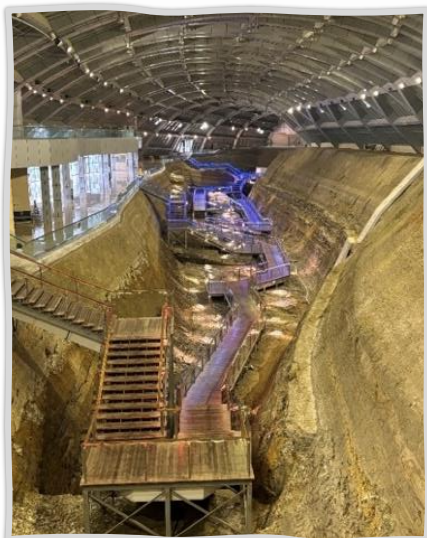
Attractions:

- The typical Cryogenian and Ediacaran successions in the Three Gorge area
- The Cambrian Qingjiang biota, Changyang
- The GSSPs for the base of the Dapingian and Hirnantian stages, Yichang
- Devonian to Triassic successions in the Three Gorge area



STRATI 2026

5. The Yanliao and Jehol biotas in North China Pre-conference excursion, 4 days



Attractions:

- The Yanliao biota, exhibiting numerous fossils of insects, branchiopods, salamanders, feathered dinosaurs, diverse mammals, and abundant plant fossils, Inner Mongolia and Hebei
- The famous Early Cretaceous Jehol biota, Liaoning

6. Linxia Basin and Loess in North China Post-conference, 4 days



Attractions:

- The Cenozoic successions in the Linxia Basin, yielding a large number of mammalian and other vertebrate fossils
- The Early Pleistocene Wucheng Loess, the Middle Pleistocene Lishi Loess, and the Late Pleistocene Malan Loess in the Linxia Basin, North China.

7. Mesoproterozoic, Cambrian and terrestrial Permian-Triassic successions in the Yuntai Mountain-Shaolin Temple areas, Henan Province, central China

Post-conference excursion, 4 days



Attractions:

- Mesoproterozoic and Cambrian marine successions in the Yuntaishan, Dengfeng and Yiyang areas, central China
- Terrestrial Permian-Triassic successions and the PTB in the Yuntai Mountain-Shaolin Temple areas, Henan Province

8. Upper Devonian to lowest Carboniferous successions in Guilin Karst area, Guangxi, South China

Post-conference excursion, 2 days

Attractions:

- Upper Devonian and Lower Carboniferous carbonate successions and karst landscapes in Guilin City
- The metazoan and microbial reefs around the F-F boundary in Guilin
- The Nanbiancun auxiliary stratotype section for the Devonian-Carboniferous boundary GSSP





STRATI 2026

9. Mesoproterozoic successions in Jixian area, Tianjin City, North China

Pre-conference excursion, 2 days



Attractions:

- The Mesoproterozoic successions in rift and post-rift basins in the North China Craton, Jixian area, Tianjin
- The first confirmed eukaryotes from the Gaoyuzhuang Formation, mini-digital stromatolites from the Wumishan Formation, and spectacular giant stromatolites from the Tieling Formation

10. Meishan section and Meishan Geopark

Mid-conference excursion, one day

Attractions:

- The base of the Changhsingian and the PTB GSSPs at Meishan, Changxing
- The history of the largest Phanerozoic mass extinction shown in the Meishan Geopark

11. Tai Lake Xishan Section

Mid-conference excursion, one day

Attractions:

- Geology of the Xishan Island in Tai Lake
- The PTB succession and the changeover of reef ecosystem

12. Ordovician to Silurian strata and Anji Biota in the Anji, Zhejiang

Mid-conference excursion, one day

Attractions:

- Reference section of the Hirnantian Stage in Lower Yangtze Region
- The deep-water Anji Biota, showing diverse Hirnantian sponges and graptolites



STRATI 2026

Location

Suzhou, located at the lower reaches of the Yangtze River in southeastern Jiangsu Province, eastern China and next to Shanghai City, is one of the hottest tourism destinations in China. It is also a place celebrated for its Chinese traditional gardens, ancient canals, and cultural heritage. Several locations are stratigraphically and geologically significant within the city, including Taihu Xishan Geopark, Tiger Hill (Jurassic Volcanic Rock Layers), Archaeological Park of the Caoxieshan Site–Neolithic Period, Granite Landforms of Lingyan Mountain and Tianping Mountain and Two GSSPs and end-Permian mass extinction at the Meishan Section, Changxing nearby. Suzhou is also a historical city in the Yangtze delta area. Its Most Famous Historical Sites and Cultural Heritage of Suzhou include The Humble Administrator's Garden (Zhuo Zheng Yuan), Zhouzhuang, Kunqu Opera.

The weather in Suzhou in late June and early July is typically hot (30–34°C), humid, and rainy, as it falls during the plum rain season and transitions into summer. Congress attendees are advised to wear light, breathable clothing (quick-dry fabrics recommended), waterproof shoes, and bring umbrellas or raincoats (hotels typically provide umbrellas, but availability may be limited during peak demand).



Travel

There are lots of direct flights from European, North American, Oceanian and African countries to Shanghai Pudong or Hongqiao airports (details on the website), and Suzhou is next to Shanghai and has direct trains and buses access to the Shanghai Hongqiao airport (there are airport shuttle bus or Shanghai Suburban Railway Airport Link Line between Pudong and Hongqiao airports). It takes half hour from the Hongqiao airport to Suzhou. More guidance on the website.



STRATI 2026

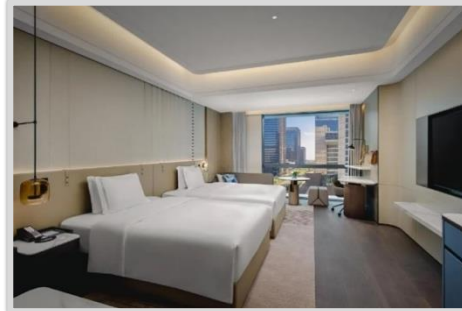
Accommodation options

1. Crowne Plaza Kunshan East, an IHG Hotel

Standard room: 460 to 580 RMB (\$65-80) /night

Suites: 1200 to 1500 RMB (\$165-205) /night

All rooms are equipped with air conditioning and a desk. The accommodation offers an indoor pool, fitness center, two onsite restaurants and free WiFi.



2. Kunshan Jinling Grand Hotel

Standard room: 380 to 460 RMB (\$52-63) /night

Suites: 760 RMB (\$104) /night

Rooms accessible for people with disabilities are available. All rooms are equipped with air conditioning and a desk. The accommodation offers an indoor pool, fitness center, two onsite restaurants and free WiFi.



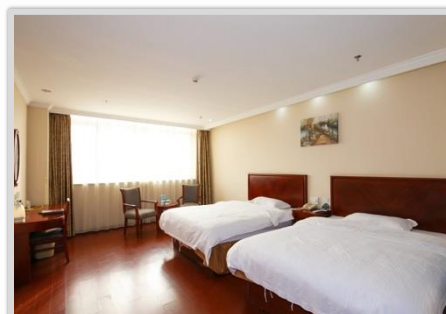
3. Students accommodation options:

Vienna Hotel Jiangsu Kunshan Exhibition Center

GreenTree Inn Jiangsu Kunshan Lujia Town Furong Road Express Hotel

GreenTree Inn Suzhou Kunshan Dongcheng Road International Exhibition Express Hotel

Standard room: 200 to 250 RMB (~\$30) /night



All rooms are equipped with air conditioning.
More details will be updated on the website.



STRATI 2026

Visa

Under China's current policies, citizens from 31 countries can travel to China visa-free for up to 30 days. Additionally, citizens from 28 countries, including several major European nations, can stay visa-free for up to 15 days. Furthermore, citizens from 54 countries are eligible for visa-free transit, allowing them to stay in China for up to 10 days (details on the website). Invitation letter will be provided upon request.

Registration and fees:

Early-bird registration:

2000 RMB/280\$ (professional), 1600 RMB/210\$ (retired professional), 1200 RMB/160\$ (students)

Standard registration:

2900 RMB/400\$ (professional), 2200 RMB/300\$ (retired professional), 1500 RMB/200\$ (students)

Onsite registration:

3300 RMB/450\$ (professional), 2500 RMB/350\$ (retired professional), 1800 RMB/240\$ (students)

Registration fee including icebreaker, lunch, hard copy program, digital proceedings and a bag.

Accompanying person: 1000 RMB/150\$, access to icebreaker, lunch and a bag (Organized accompanying persons' social activities on the website).

Important dates

Start of session proposal submission: May 1st, 2025

End of call for sessions: December 1st, 2025

Dispatch of second circular: December 31st, 2025

Opening abstract submission: December 31st, 2025

Opening registration: December 31st, 2025

Deadline for abstract submission: March 15th, 2026

Deadline for early bird registration: March 15th, 2026

Dispatch of third circular: May 30th, 2026